



teknix
VBX

- 4G high speed wireless video transmission
- Local SD/HDD video storage
- Support VPDN, APN, IP/MAC filtering
- Support POE output
- Built-in watchdog, self-recovery after running failure

Industrial video router



Multiple network standards



HD video surveillance

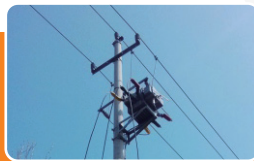


SD video storage



Built-in watchdog

KEY APPLICATION INDUSTRY



ELECTRICITY



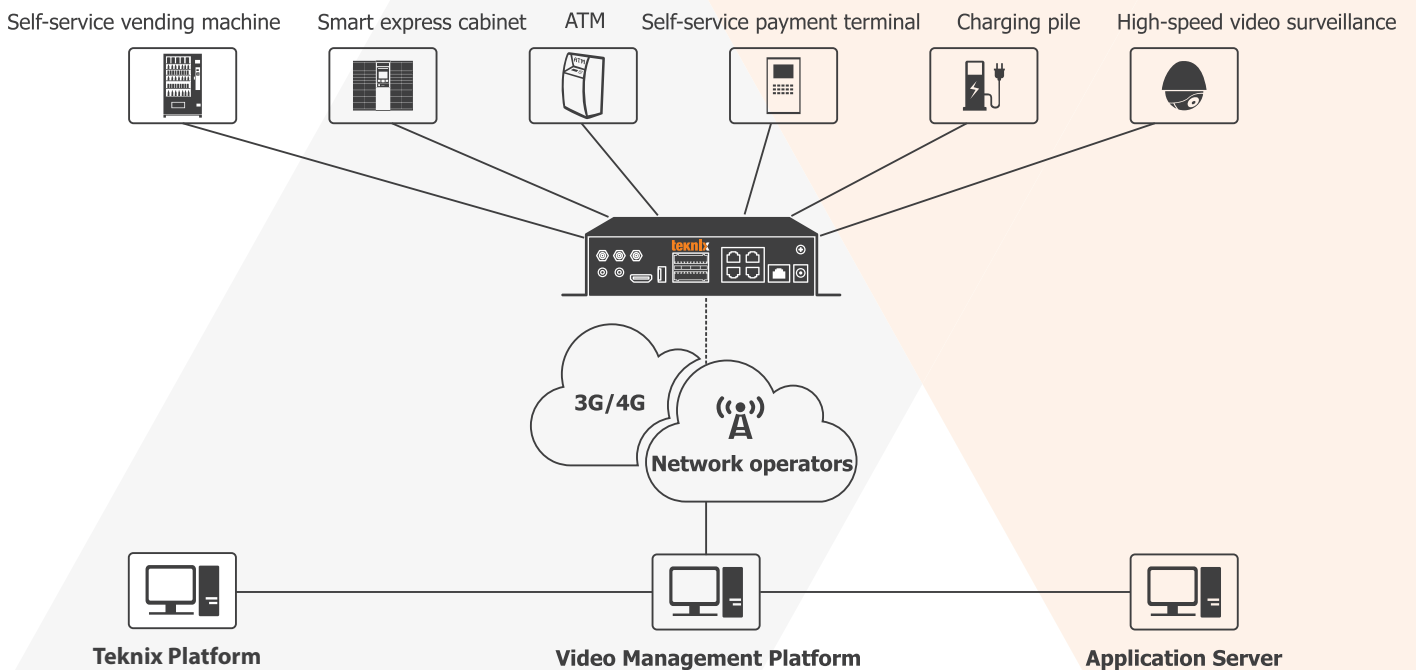
INDUSTRY



TELECOM



ARCHITECTURE



VBX Industrial video router

Technical specifications

Network type	Multiple network standards	TD-LTE/FDD-LTE/TD-CDMA/WCDMA(HSPA+)/EVDO/DEGE/CDMA/GPRS		
	Video input	4*IPC(1080P)	Image compression standard	H.264 Main Profile
	Image Resolution	CIF/HD1/D1/720P/1080P(Optional)	Video signal standard	Network port (optional POE or separate external power supply)
Video Surveillance	Video output display	Single screen, quad screen screen configurable		
	Local video	· Support 4 channels of local video recording (automatic coverage) · Support IO alarm recording		
	Real-time audio and video	· 4 channels of real-time audio and video · iScan platform remote browsing video		
	Remote recording management	· View and download historical videos through the iScan platform		
Audio standard	Audio input	MIC	Audio bit rate	default 32Kbps
	Audio output	Line-out(SPK)	Audio signal standard	3.5 port
	Audio and video output	1*HDMI	Antenna interface	5Ω/SMA Female port
	SIM	1.8V/3V	USB Interface	USB2.0
Interfaces	Serial interface	1*RS485, 2*RS232	LAN	5*10M/100M Adaptive network RJ45 interface
	WiFi interface	Support 802.11b/g/n,2.4G/5.8G	Button	Support RESET button
	HDMI interface	HDMI interface supporting 1.4a protocol standard, maximum resolution: 1920*1200/1920*1080		
Storage medium	SD card	1 SD card, maximum capacity 128G	Serial hard disk	1 2.5-inch SATA hard drive with a maximum capacity of 2TB
I/O alarm	Alarm input	Support 8 channels of I/O port alarm input		
	Alarm output	Support 4 channels of I/O port alarm output		
Voice intercom	Two-way voice intercom	Two-way voice call between platform and terminal		
Extensions	Cloud platform control	iScan platform, Web local control IPC platform		
Routing	Network routing	5*LAN, 3G/4G, DHCP	WiFi	AP/Station, Support 2.4G/5.8G
DTU	DTU data transmission	Transparent transmission, DDP/IHDC protocol client mode		
Power consumption	power supply	12V/48V DC	Working power consumption	<10W@+48VDC (without peripherals)
Physical characteristics	weight	About 1.06 KG	Enclosure rating	IP44
	Housing size	218X129.3X50mm		
working environment	storage temperature	-40°C~+85°C	Relative humidity	10%~95%
	Working temperature	-30°C~+70°C		

Appearance Dimension

